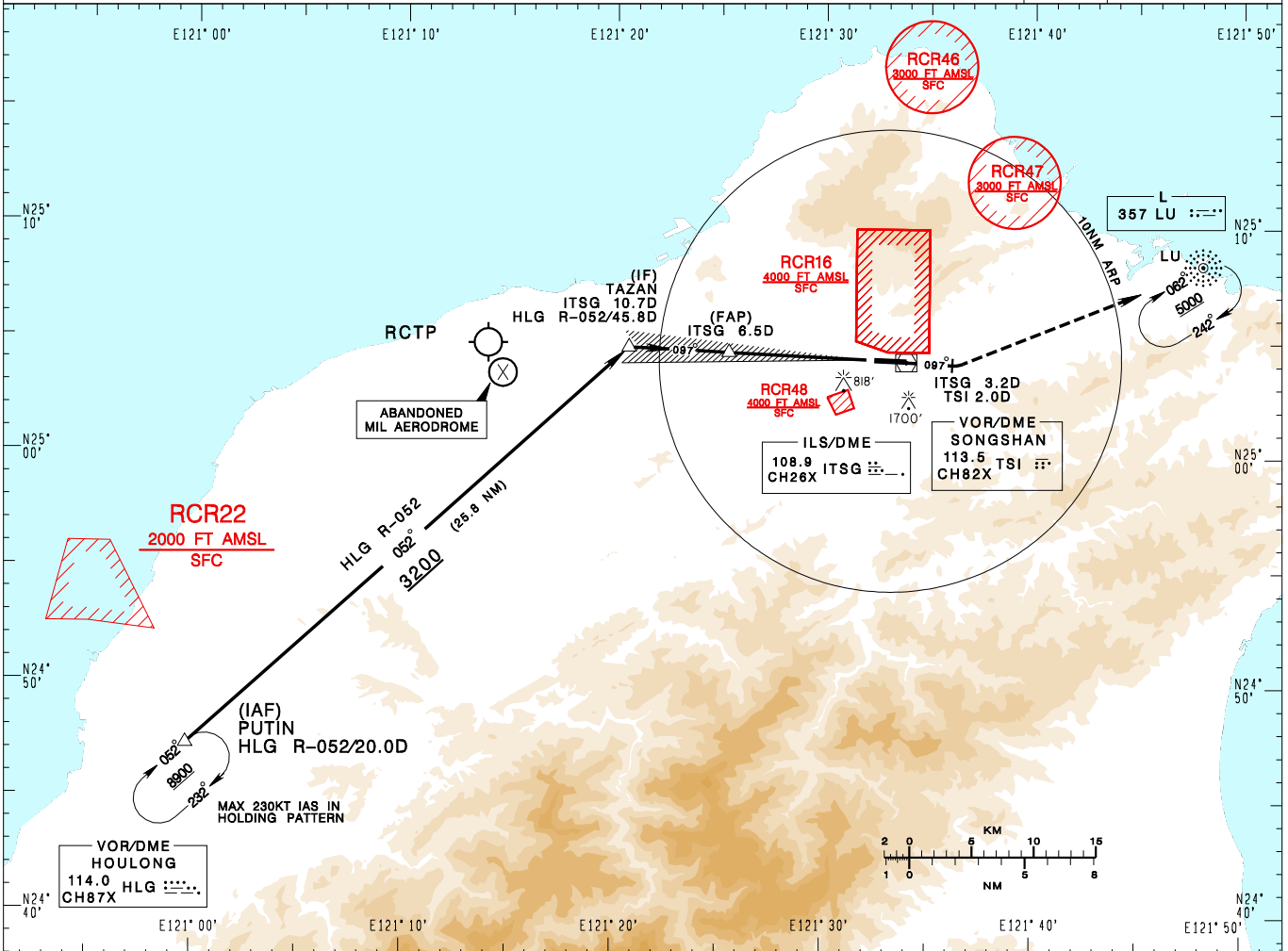


臺北/松山機場  
TAIPEI/SONGSHAN AD

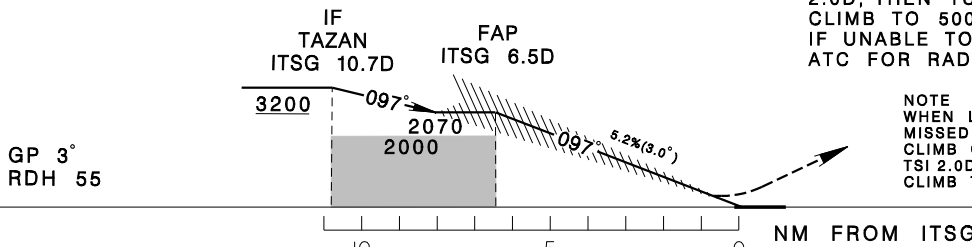
RCSS  
ILS Y RWY10

TAIPEI APP 119.7 119.6 125.1	SONGSHAN TWR 118.1	ATIS 127.4 341	VAR 5° W-2022 	
Apt Elev: 18'	Rwy10 THR Elev: 13'	Trans Level: FL130		Trans Alt: 11,000'
BEARINGS ARE MAGNETIC; DISTANCES ARE NAUTICAL MILES; ELEVATIONS, HEIGHTS IN FEET				



MISSED APCH:  
CLIMB ON HDG 097 UNTIL ITSG 3.2D/TSI 2.0D, THEN TURN LEFT DIRECT TO LU, CLIMB TO 5000 AND HOLD.  
IF UNABLE TO REACH 5000 AT LU, ADVISE ATC FOR RADAR VECTOR.

NOTE  
WHEN LU IS NOT AVAILABLE,  
MISSED APCH:  
CLIMB ON HDG 097 UNTIL ITSG 3.2D/TSI 2.0D, THEN TURN LEFT HDG 070, CLIMB TO 5000, EXPECT RADAR VECTOR.



MINIMA (OCA IN FT, VIS IN M, OCH IN FT)

CATEGORY		A	B	C	D
STRAIGHT IN	MA minima climb gradient 4% (244ft/NM)	224/800 211	234/800 221	244/800 231	253/800 240
	MA minima climb gradient 2.5% (152ft/NM)	627/2100 614	637/2200 624	647/2200 634	657/2300 644
STRAIGHT IN (ALS OUT)	MA minima climb gradient 4% (244ft/NM)	224/1200 211	234/1200 221	244/1200 231	253/1200 240
	MA minima climb gradient 2.5% (152ft/NM)	627/2800 614	637/2900 624	647/2900 634	657/3000 644
CIRCLING		1180/3600 1162	N/A		

NOTE  
1. A 1700ft-HIGH BUILDING AT 2.1 NM SOUTH OF THR 28.  
2. A 818ft-HIGH BUILDING AT 2 NM SW OF THR 10.  
3. CIRCLING ONLY AUTHORIZED FOR CAT A HELICOPTERS.  
4. ATS SURVEILLANCE REQUIRED.

\*DME REQUIRED.

CHANGES: NEW CHART